

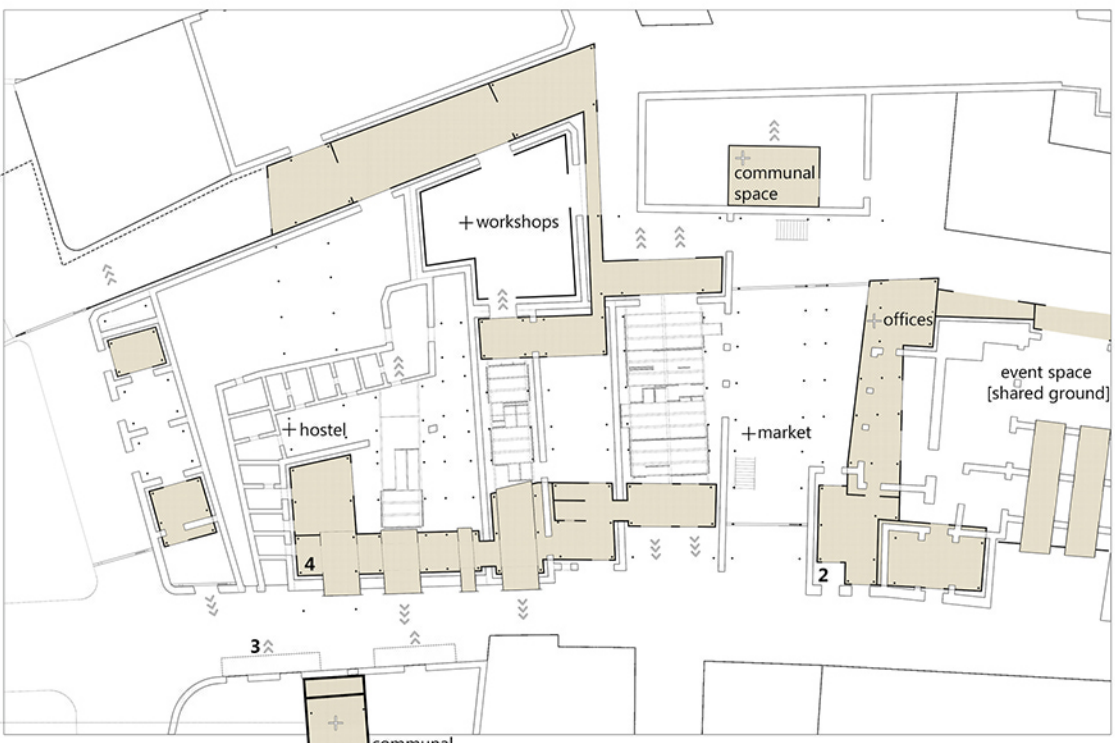
Scenario 1 - two porous edges that indicate the previous existence of the buffer zone

[absence of buffer zone]

programmatic separation within the layers of the proposed edge (transitional space between urban fabric and buffer zone)

the absence of boundary between the expandable structures permits the bridging between the two communities

the expandable structures extend over the city enhancing the residential use on a higher level



Scenario 2 - negotiation of the two user groups (citizens + UN) within the two edges

[citizens as the authors of the buffer zone under the control of the UN]

Layering of programme within the edge

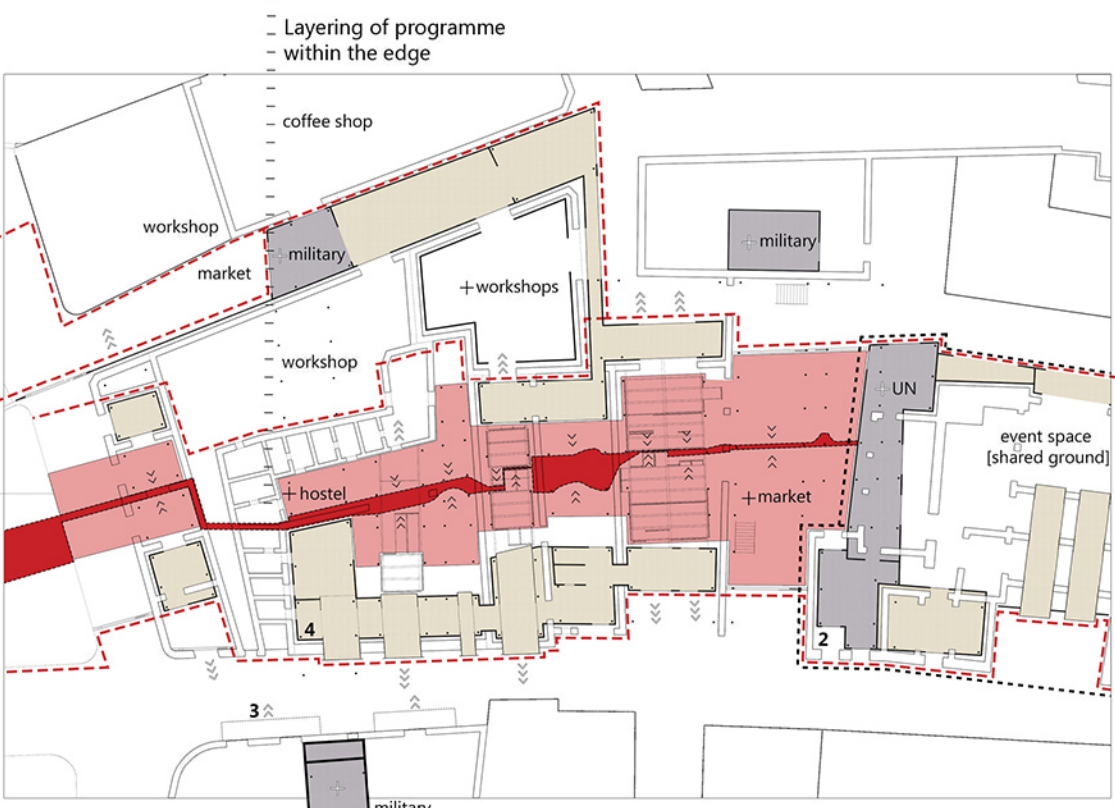
proposed edge [buffer zone limits]

programmatic separation within the layers of proposed edge (transitional spaces between urban fabric and buffer zone)

possible transformation of the buffer zone

buffer zone defined from the expansion of activities and the structure of the living units/retail

proposed edge [buffer zone limits]



Scenario 3 - two strict boundaries that block any action inbetween

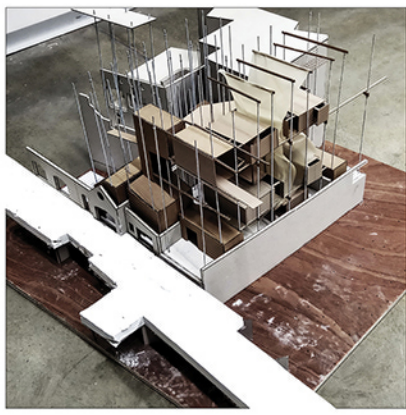
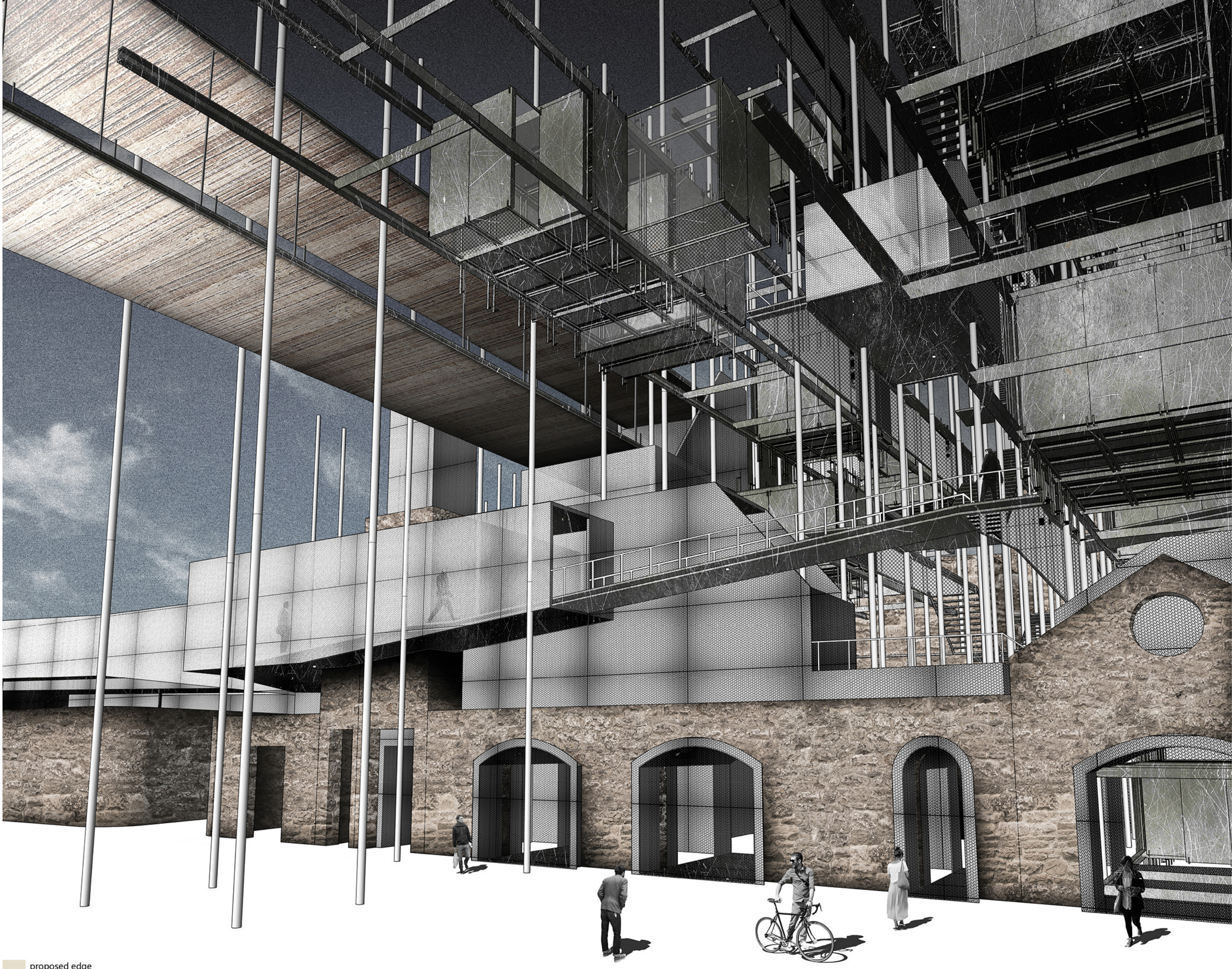
[UN as the author and inhabitant of the buffer zone]

proposed edge [buffer zone limits]

possible transformation of the buffer zone [UN and military use]

the width of the buffer zone is pushed to the limits defined by the proposed edge blocking any permeability

proposed edge [buffer zone limits]



Experimenting with the system components

Programme

In the higher levels the relation of mass and void of the existing site is reversed, where the living units, services and public areas are established in the empty space of the existing buildings. Moreover, the horizontal circulation platforms are made with open steel mesh to reflect the void above the existing walls.

On the ground level the continuous edge host the retail activities, while as it gets higher it includes the services for both the retail and residential areas. In addition, the unification of the edge serves as a continuous path for the UN patrol in the case of scenario 3.

higher level program

Scenario 1

Scenario 2

Scenario 3

expandable structure

residential

residential

residential

vertical circulation

offices

control level (UN/military)

control level (UN/military)

expandable structure

residential

residential

UN living

vertical circulation

public+services

public+services

public+services

expandable structure

residential

residential

residential

vertical circulation

public+services

public+services

public+services

expandable structure

residential

residential

residential

vertical circulation

offices

control level (UN/military)

control level (UN/military)

expandable structure

residential

residential

residential

vertical circulation

offices

control level (UN/military)

control level (UN/military)

expandable structure

offices

UN offices

UN offices

expandable structure

residential

UN living

UN living

vertical circulation

offices

control level (UN/military)

control level (UN/military)

expandable structure

offices

UN offices

UN offices

expandable structure

residential

UN living

UN living

vertical circulation

offices

control level (UN/military)

control level (UN/military)

expandable structure

offices

UN offices

UN offices

expandable structure

residential

UN living

UN living

vertical circulation

offices

control level (UN/military)

control level (UN/military)

expandable structure

offices

UN offices

UN offices

expandable structure

residential

UN living

UN living

vertical circulation

offices

control level (UN/military)

control level (UN/military)

expandable structure

offices

UN offices

UN offices

expandable structure

residential

UN living

UN living

vertical circulation

offices

control level (UN/military)

control level (UN/military)

expandable structure

offices

UN offices

UN offices

expandable structure

residential

UN living

UN living

vertical circulation

offices

control level (UN/military)

control level (UN/military)

expandable structure

offices

UN offices

UN offices

expandable structure

residential

UN living

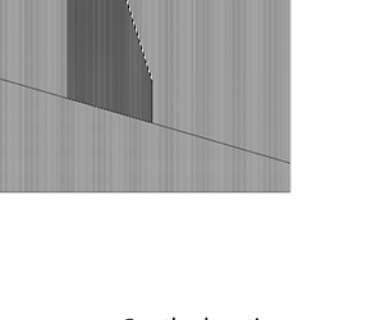
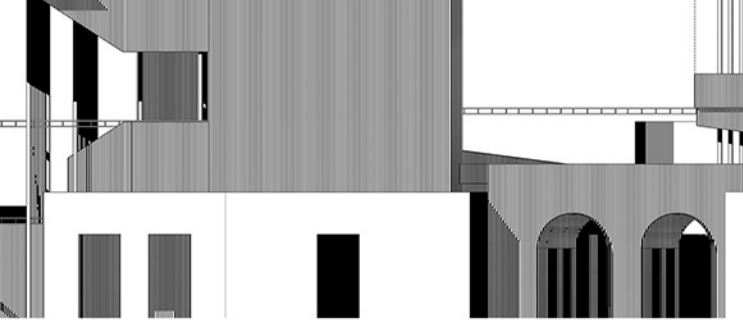
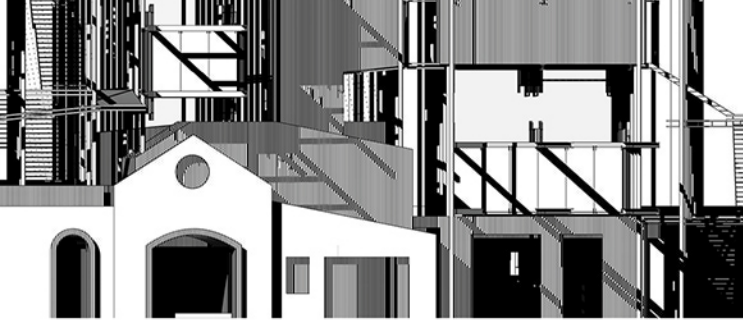
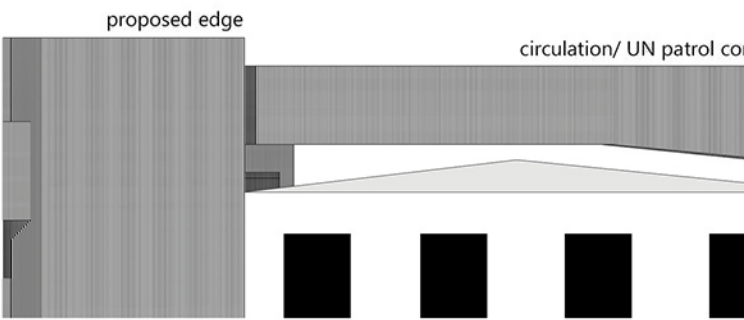
UN living

vertical circulation

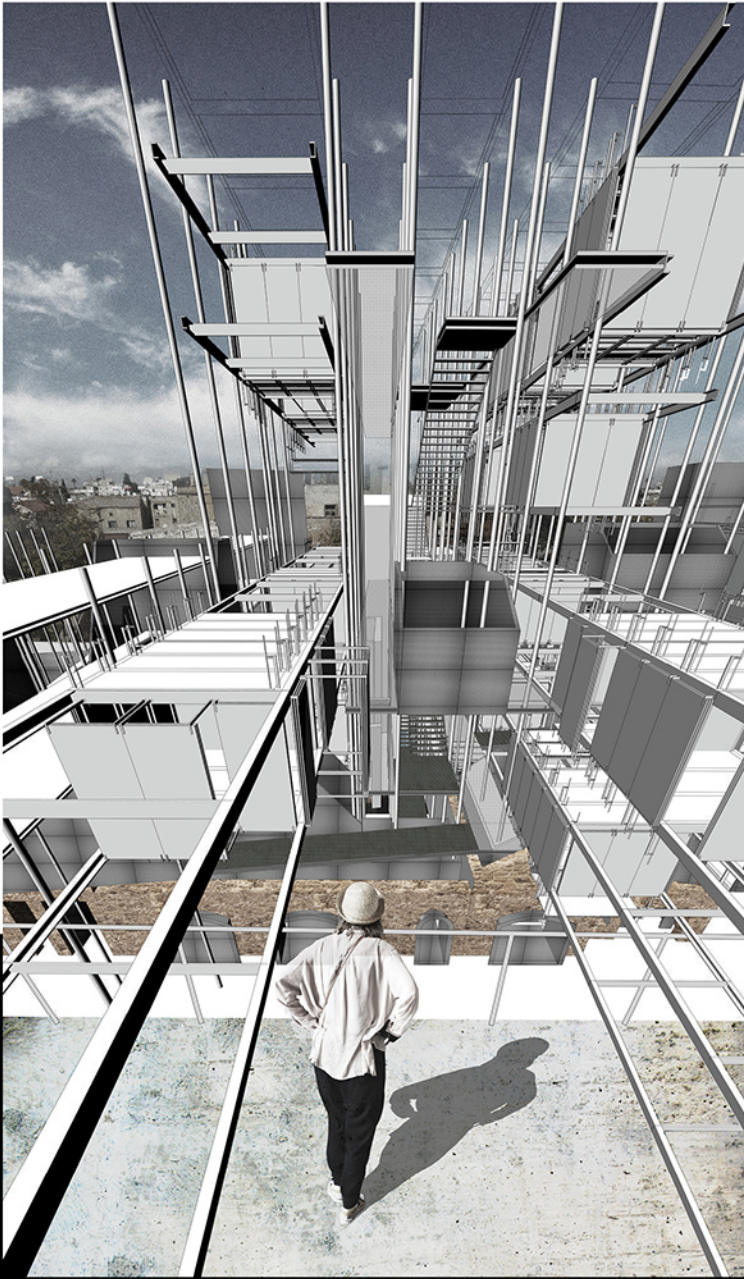
offices

control level (UN/military)

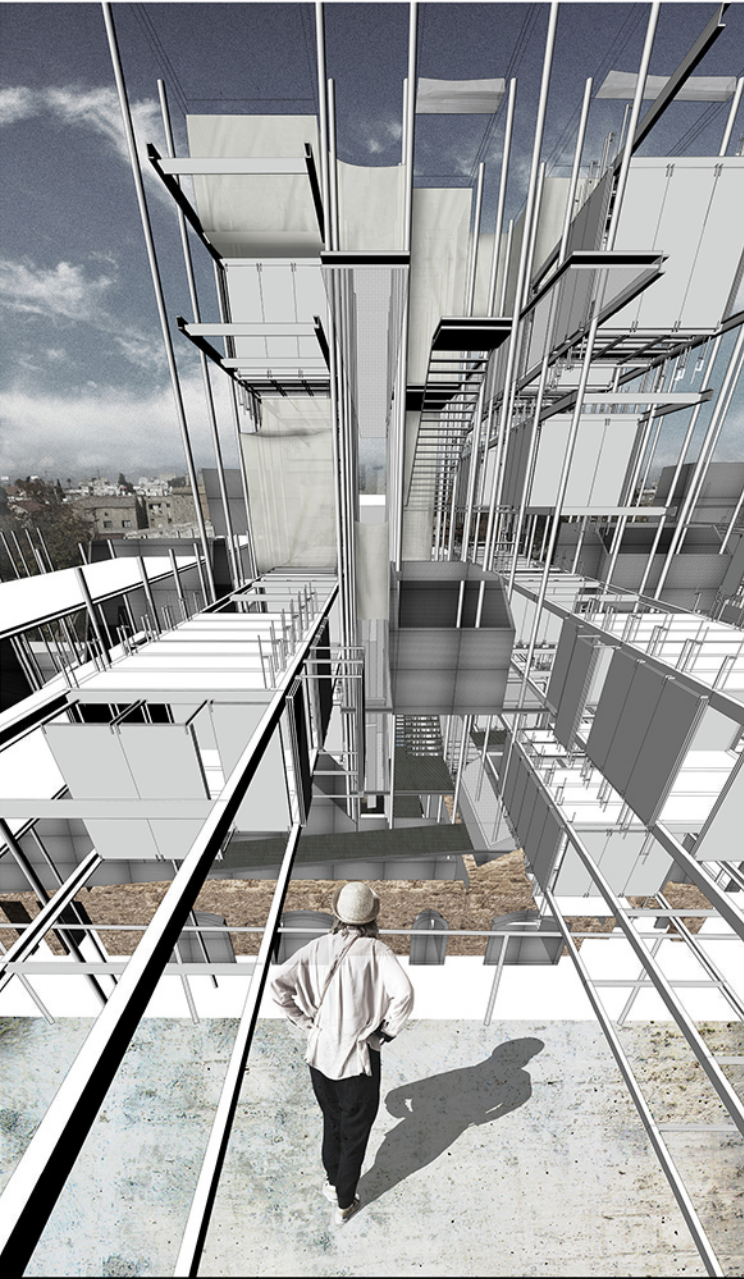
control level (UN/military)



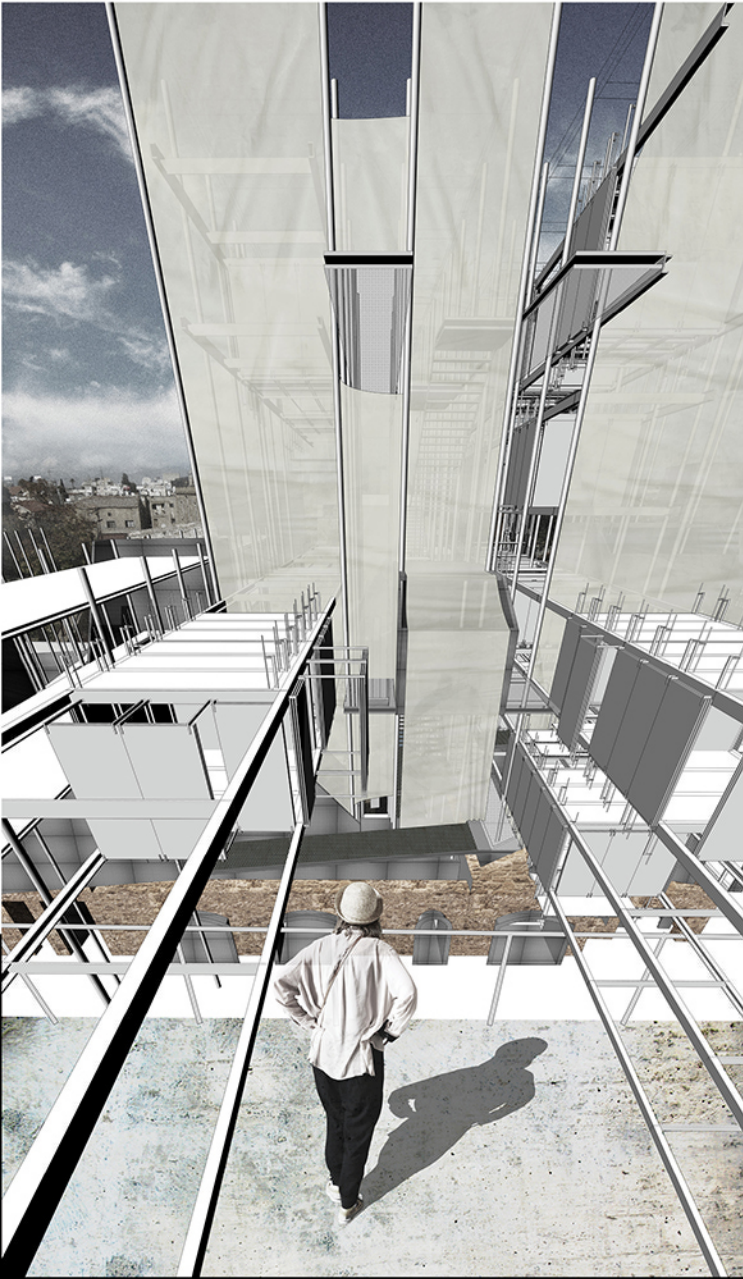
South elevation



Scenario 1



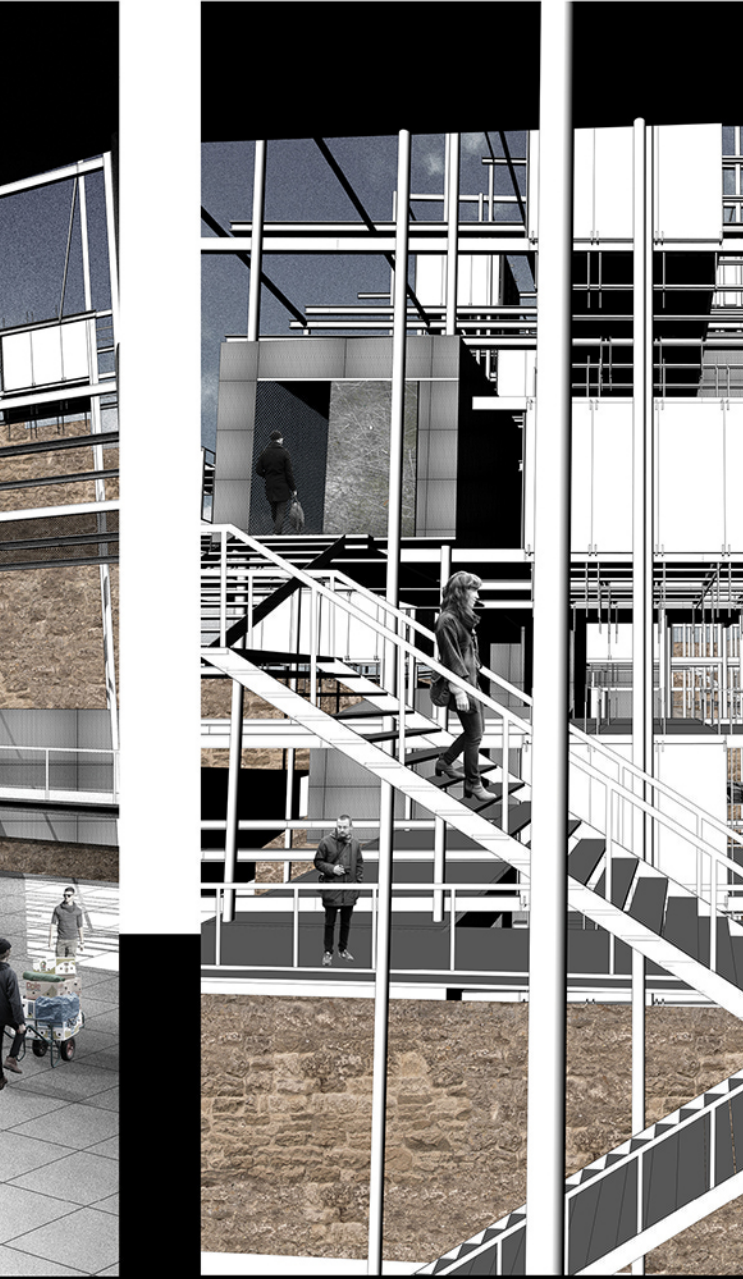
Scenario 2



Scenario 3



Open market



Expandable structures pushing the edge of the buffer zone

Buffer zone

The buffer zone is defined by layers of plastic membranes contained the public spaces and creating the strict boundary of the buffer zone by blocking the access from one side to the other. The membranes are supported by the structure on top and depending the demand of each scenario is unfolded to the desired length. After the membrane is unfolded, it is attached on the vertical grid to enable the width of the buffer zone to expand or shrink.

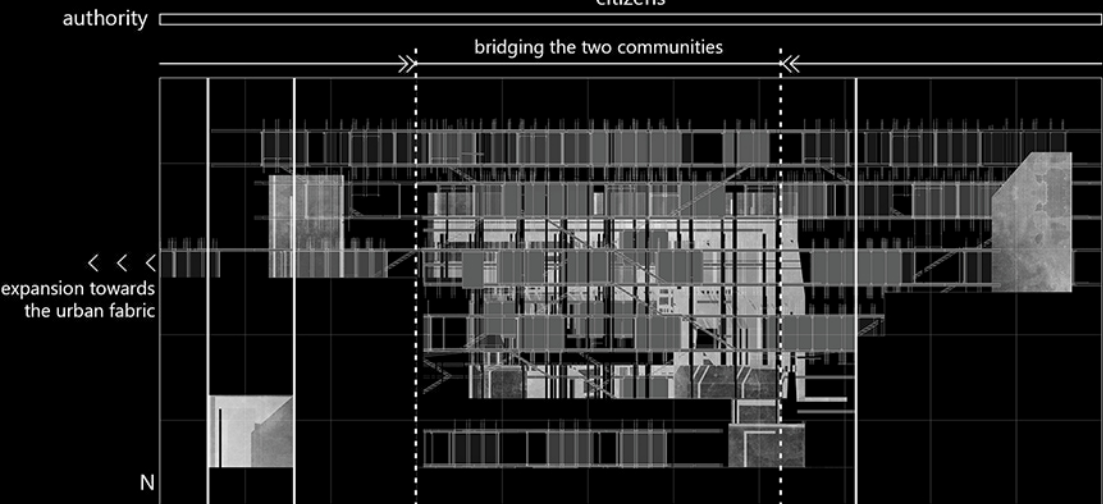
While in the second scenario the membrane is pushed in the negative width formed by the habitation, in the third scenario it is attached on the maximum limits of the buffer zone above the edge to block any physical and visual access.

existing buffer zone edge

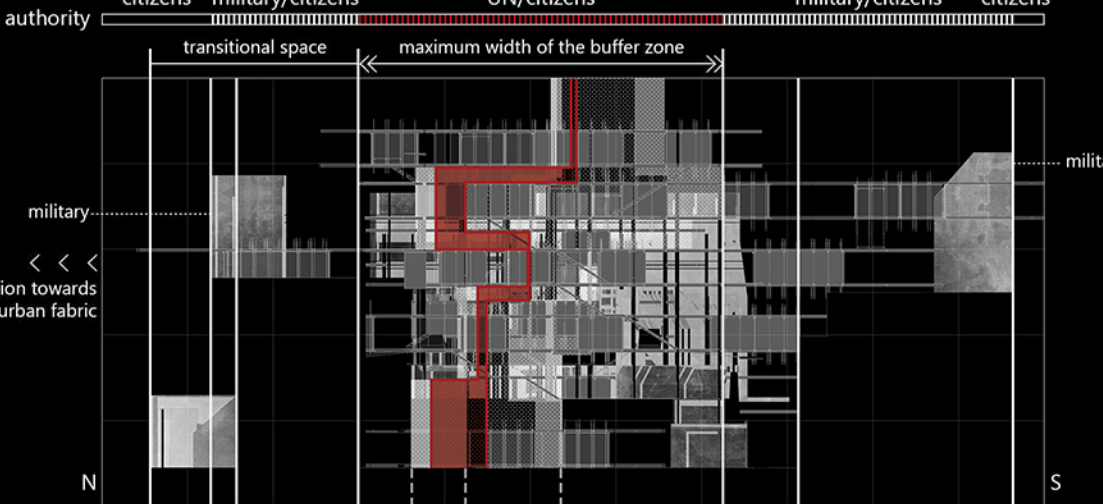
proposed buffer zone edge

existing military edge

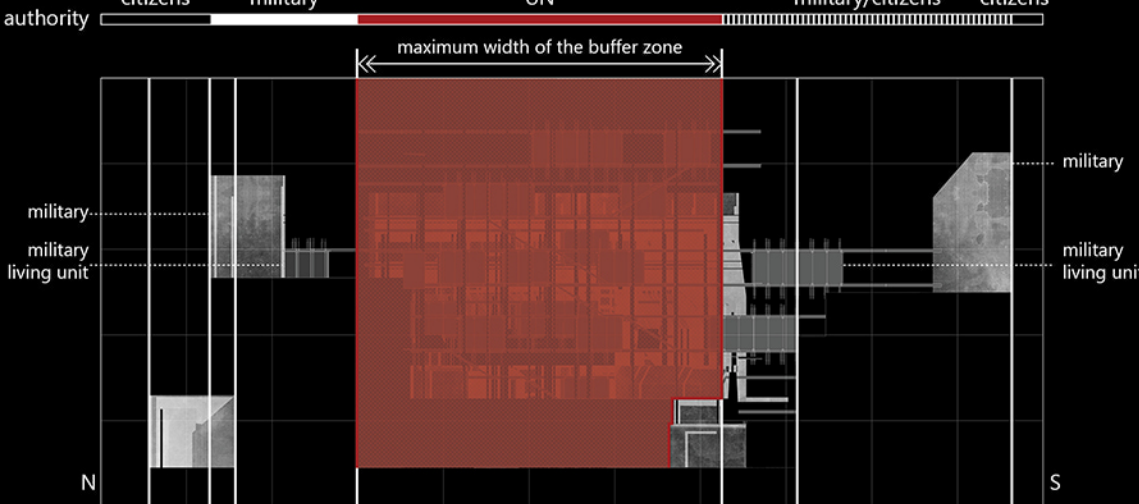
proposed military edge



Scenario 1
[absence of buffer zone]



Scenario 2
[citizens as the authors of the buffer zone under the control of the UN]



Scenario 3
[UN as the author and inhabitant of the buffer zone]